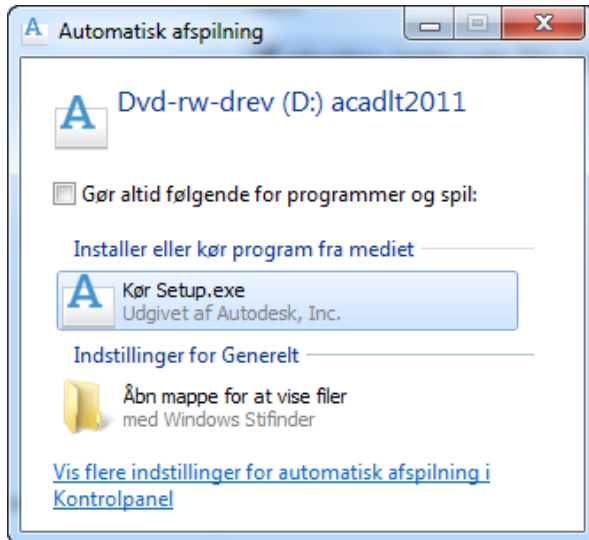
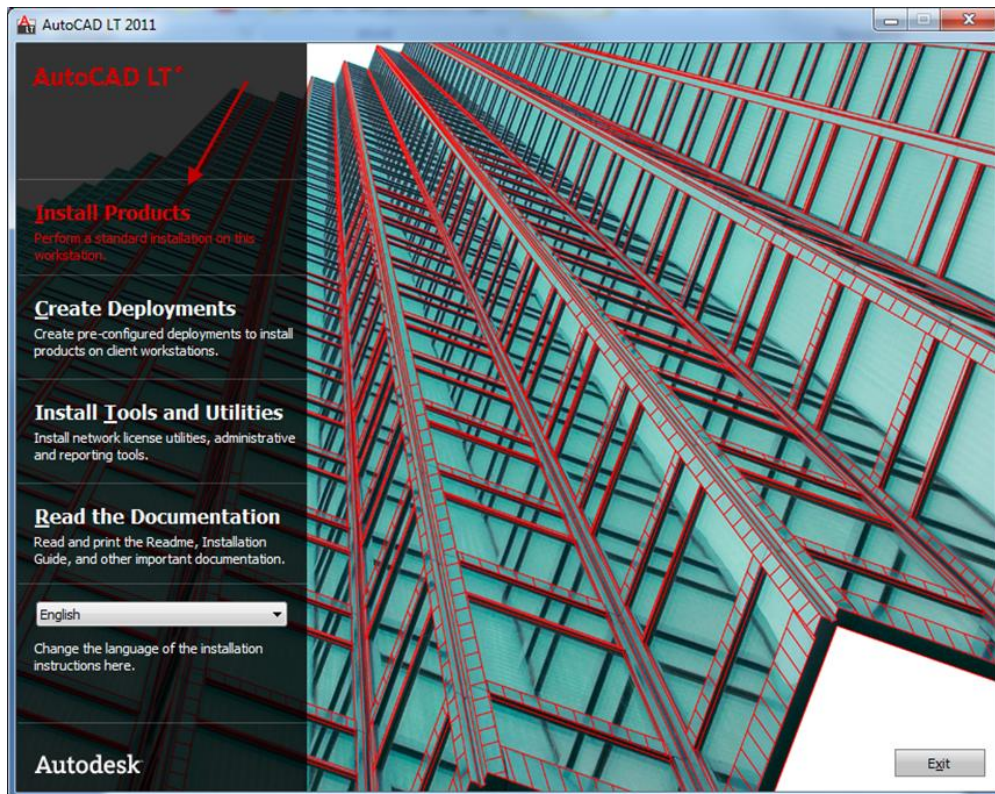


# Installationsguide AutoCAD LT Suite 2011

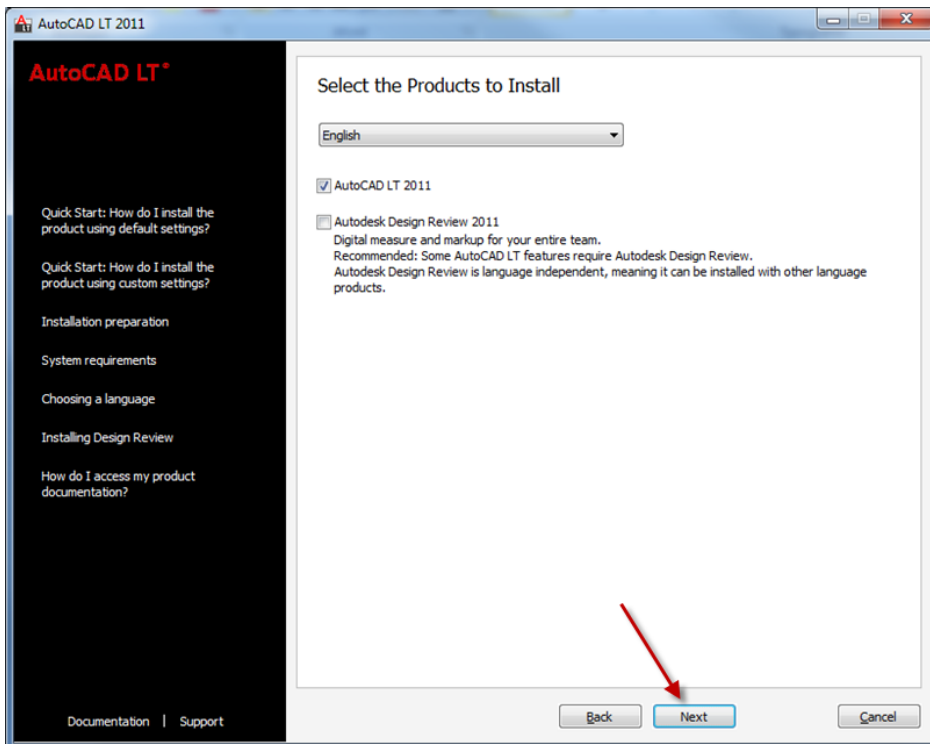
Isæt DVD'en og tryk på Kør Setup.exe



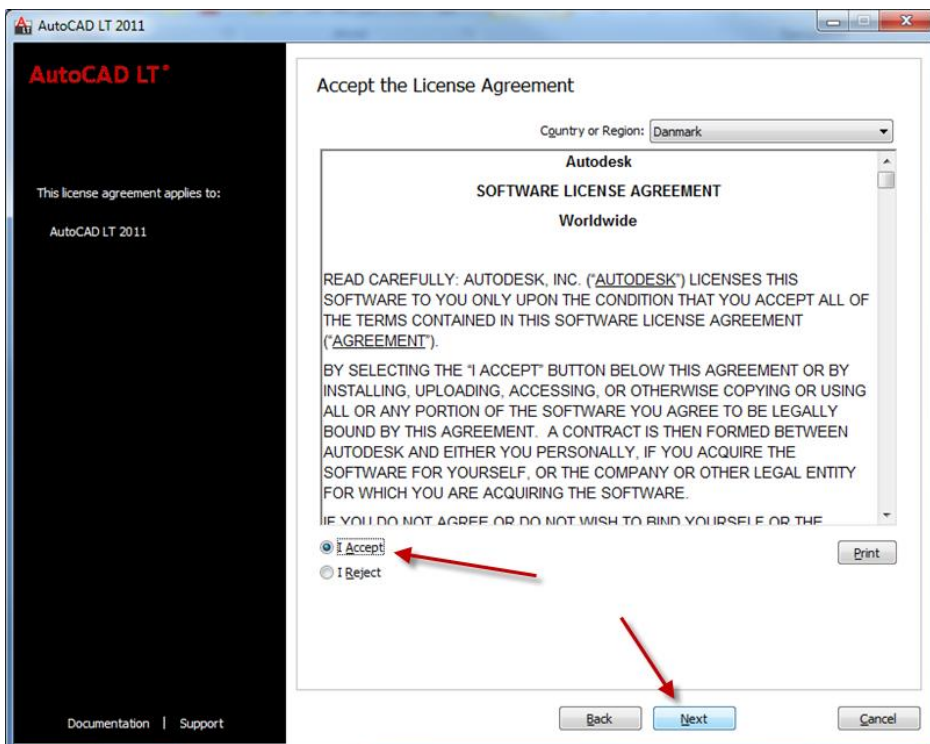
Dobbeltklik på "Install Products"



Sæt flueben i AutoCad LT 2011 og tryk "Next".



Klik på I Accept og derefter på "Next".



Du skal nu udfylde alle felter og vælge "I have product information". Klik derefter på "Next".

Serial number og Product key finder du på bagsiden af DVD coveret markeret med gult.

AutoCAD LT 2011

**AutoCAD LT\***

The information you enter here is retained with your product. To review this product information later, on the InfoCenter toolbar, click the drop-down arrow next to the Help button (the question mark). Then click: About - Product Information.

Your serial number and product key are located on the product package or in your Autodesk Upgrade and Licensing Information email. You may enter your product information at any time following installation.

Documentation | Support

### User and Product Information

First name:

Last name:

Organization:

I want to try this product for 30 days

I have my product information

Serial number:

Product key:

Please note that all data gathered during product activation and registration is used in accordance with and pursuant to the Autodesk [Privacy Policy](#) and Autodesk's [Export Compliance](#) policy.

Back Next Cancel

Installationen kan nu begyndes. Klik på "Install".

AutoCAD LT 2011

**AutoCAD LT\***

The following will be installed:

- Autodesk Material Library 2011
- AutoCAD LT 2011
- AutoCAD LT 2011 Language Pack

Documentation | Support

### Begin Installation

Review the settings below. If you do not want to make changes, click Install. If you want to modify these settings, use the Back button. If you want to make additional configuration changes, select the product from the drop-down list and click Configure.

Select a product to configure:

Configure

Current settings:

|               |             |
|---------------|-------------|
| First name:   | Test        |
| Last name:    | Testensen   |
| Organization: | Betech Data |

---

**AutoCAD LT 2011 Settings**

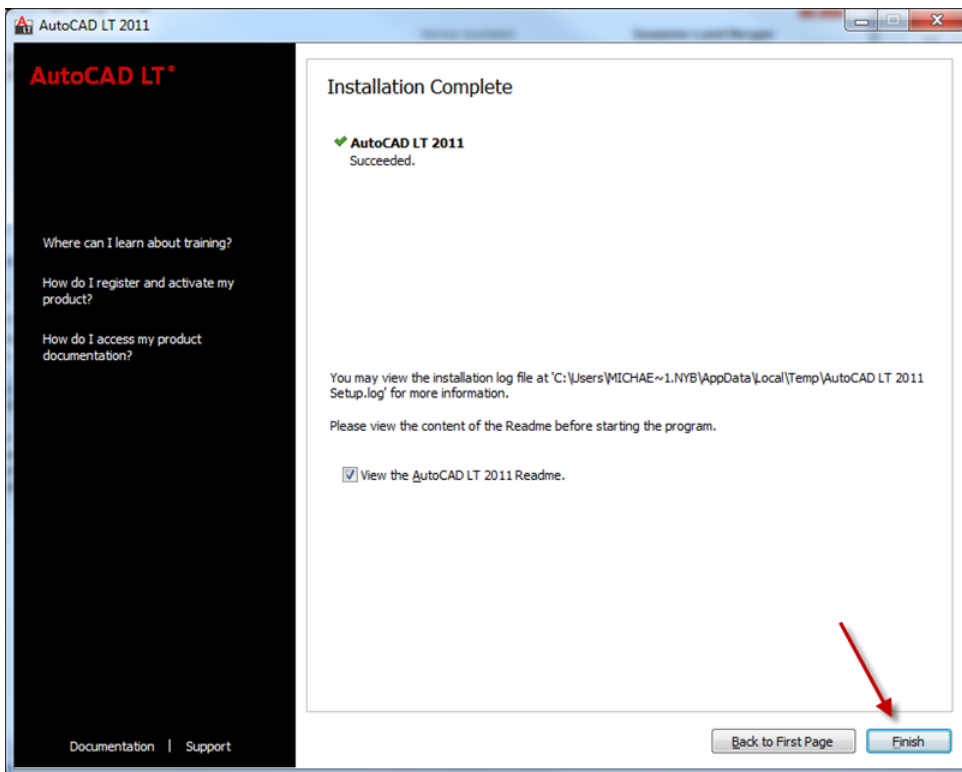
|                            |  |
|----------------------------|--|
| Language:                  | English                                    |
| Install location:          | C:\Program Files\Autodesk\AutoCAD LT 2011\ |
| License type:              | Stand-Alone License                        |
| Install type:              | Typical                                    |
| Create a desktop shortcut: | Yes  |

Copy to Clipboard

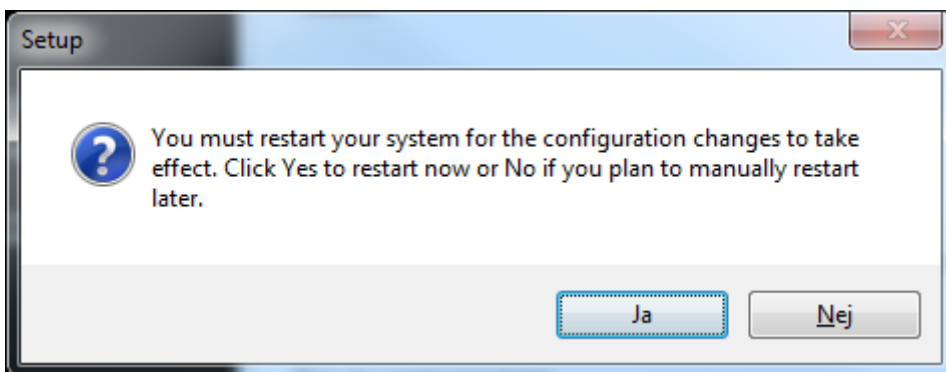
Back Install Cancel



Nu er installationen færdig og du kan klikke på "Finish".



Du kan nu genstarte dit system ved at klikke på "Ja" eller vente til senere ved at klikke "Nej".



Når programmet startes første gang får du nedenstående skærbillede:

AutoCAD LT 2011 skal nu aktiveres, klik på "Activate".



Licensen aktiveres nu og klar til brug. Klik på "Finish".

